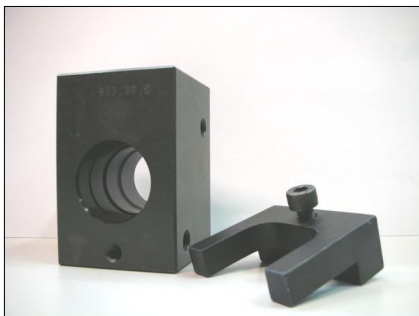


**CUMMINS L10-M11-N14 UNIT-INJECTOR  
FOR CAM-BOX 555-24/N**



Unit-Injector Adapter  
P.N.: 555-39-2



Injector Union  
P.N.: 555-38-1

**\* N.B.: The ones who own the old Cam-Box P.N.555-24/ISO have to be supplied with the software P.N.ACME10-ISO and the tappet screw P.N. 555-39-1**



Cam-Box 555-24/ISO



Software  
P.N.: ACME10-ISO



Tappet Screw  
P.N.: 555-39-1