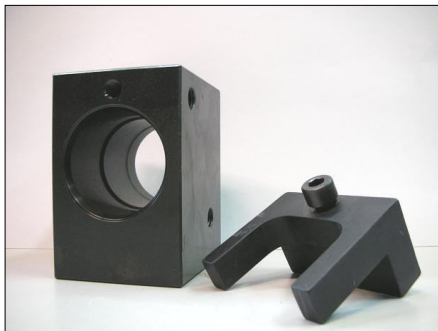


**DETROIT DIESEL UNIT-INJECTOR 5235580 (AL2573)
SHORT SPRING FOR CAM-BOX 555-24/N**



Unit-Injector Adapter
P.N.: 555-38-3



Injector Union
P.N.: 555-38-1

*** N.B.: The ones who own the old Cam-Box P.N.555-24/ISO have to be supplied with the cover P.N.555-29-2 and the tappet screw P.N. 555-38-2**



Cam-Box 555-24/ISO



Cover
P.N.: 555-29-2



Tappet Screw
P.N.: 555-38-2